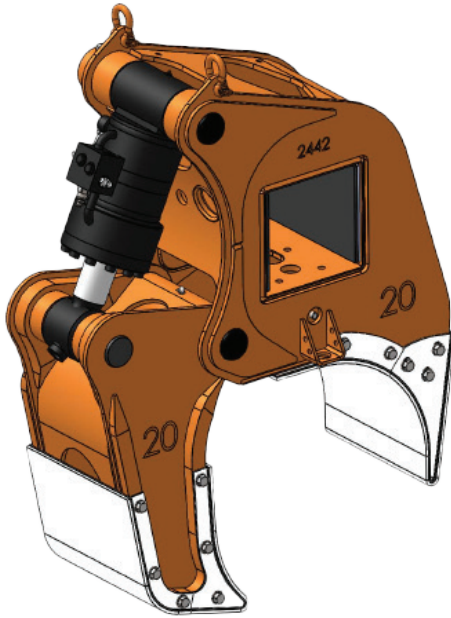


# ▲ DECKHAND® ARM OPTIONS



## PIPE ARM

- Individual sizes designed to easily handle 20" or 24" diameter coated or uncoated pipe
- Handles pipe on and off trailers, rail cars, or pipe rack without disturbing adjacent pipe
- Sensors allow operator to monitor arm grip status while moving pipe
- Load locking valve system ensures pipe is never dropped
- Proximity sensors inform operator of correct positioning and clearance
- Pipe can be lifted from an off-center position
- Arms utilize long lasting wear pads to protect coated pipe from damage
- Fast and efficient at stringing pipe during pipeline construction
- Can handle pipe covered with snow, ice or dirt

## INTERCHANGEABLE PIPE ARM

- Designed with interchangeable pipe tips to easily handle 4-18" diameter coated or uncoated pipe
- Handles pipe on and off trailers, rail cars, or pipe rack without disturbing adjacent pipe
- Sensors allow operator to monitor arm grip status while moving pipe
- Load locking valve system ensures pipe is never dropped
- Proximity sensors inform operator of correct positioning and clearance
- Pipe can be lifted from an off-center position
- Arms utilize long lasting wear pads to protect coated pipe from damage
- Fast and efficient at stringing pipe during pipeline construction
- Can handle pipe covered with snow, ice or dirt



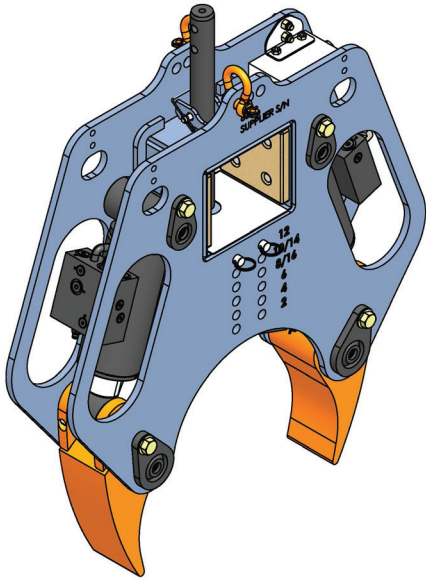
**LaValley Industries.**

[www.lavalleyindustries.com](http://www.lavalleyindustries.com)



**DECKHAND®**

# ▲ DECKHAND® ARM OPTIONS



## UTILITY ARM S

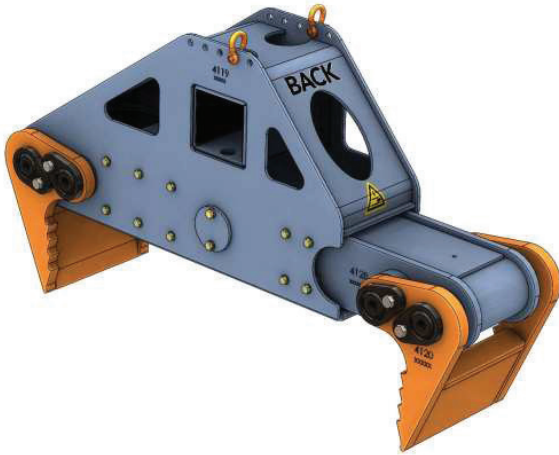
- Utility Arm S easily handles 2-16" diameter pipe, poles
- Handles pipe, poles, I-beams and casing in all weather conditions
- Sensors allow operator to monitor arm grip status while moving load
- Load locking valve system ensures load is never dropped
- Arms utilize long lasting wear pads to protect coated pipe from damage
- Load can be lifted from an off-center position
- Fast and efficient at vertical applications, such as utility pole installation
- Ideal for positioning during welding, lowering in, and pipe extraction
- Able to handle bent pipe, elbows, tees, and valves
- Can handle load covered with snow, ice or dirt

## UTILITY ARM HP

- Utility Arm HP is designed to handle 7-26" diameter pipe, poles or casings
- Handles pipe, poles, I-beams and casing in all weather conditions
- Sensors allow operator to monitor arm grip status while moving load
- Load locking valve system ensures load is never dropped
- Arms utilize long lasting wear pads to protect coated pipe from damage
- Load can be lifted from an off-center position
- Fast and efficient at vertical applications, such as utility pole installation
- Ideal for positioning during welding, lowering in, and pipe extraction
- Able to handle bent pipe, elbows, tees, and valves
- Can handle load covered with snow, ice or dirt



# ▲ DECKHAND® ARM OPTIONS



## MAT ARM

- Designed to precisely handle and position wood or composite mats up to 40' long and 12" thick
- Utilizes interchangeable tines to handle 3', 4', 5' and 8' mats
- Sensors allow operator to monitor arm grip status while moving mat
- Load locking valve system ensures mat is never dropped
- Mats can be lifted from an off-center position
- Mats can be placed with precision under total operator control
- Positive grip allows dirt and debris to be shaken off mats during removal

## DIRECTIONAL DRILLING ARM

- Handles 3.5-9" inch diameter drill rod or uncoated pipe
- Handles pipe on and off trailers, pipe rack or drill rig without disturbing adjacent pipe
- Sensors allow operator to monitor arm grip status while moving pipe
- Load locking valve system ensures pipe is never dropped
- Pipe and drill rod can be lifted from an off-center position
- Arm design allows for pipe to be picked from center of pipe rack
- Can handle drill rod and pipe covered with snow, ice or dirt

