

SAFER. FASTER. BETTER.



LaValley Industries

INNOVATING THE FUTURE OF
MATERIAL HANDLING FOR PIPELINE,
HDD, CONSTRUCTION, MINING
AND UTILITY INDUSTRIES.

**OUR TOOLS IN YOUR HANDS
GET JOBS DONE.**

lavalleyindustries.com



TONGHAND®



DECKHAND®



LAVALLEY INDUSTRIES



NEED SOMETHING SPECIAL?

FULL PRODUCT LINE



WE OFFER CUSTOM SOLUTIONS

SAFER, FASTER, BETTER.
OUR TOOLS IN YOUR HANDS
GET JOBS DONE.

Strength, precision and control, our line of “smart” attachments
outperforms all other material handling methods.

DECKHAND® MODULARITY

PIPELINE

Load lock valves, 360° rotation, shift and tilt functions allow the
DECKHAND® with Pipe Arms to outperform all other pipe
handling methods.

HDD

The **DECKHAND®** with HDD Arms allows you to pick drill rod from a
stack and perfectly position it from the safety of the excavator cab
without additional ground personnel.

UTILITIES

Strong, safe and versatile, the **DECKHAND®** with Utility Arms
allows you to position utility pole casings and I-beams
with safety, speed, and accuracy.

CONSTRUCTION

No more free swinging mats and no more near misses.
Gain total control of your road building work with
DECKHAND® equipped with Mat Arms.

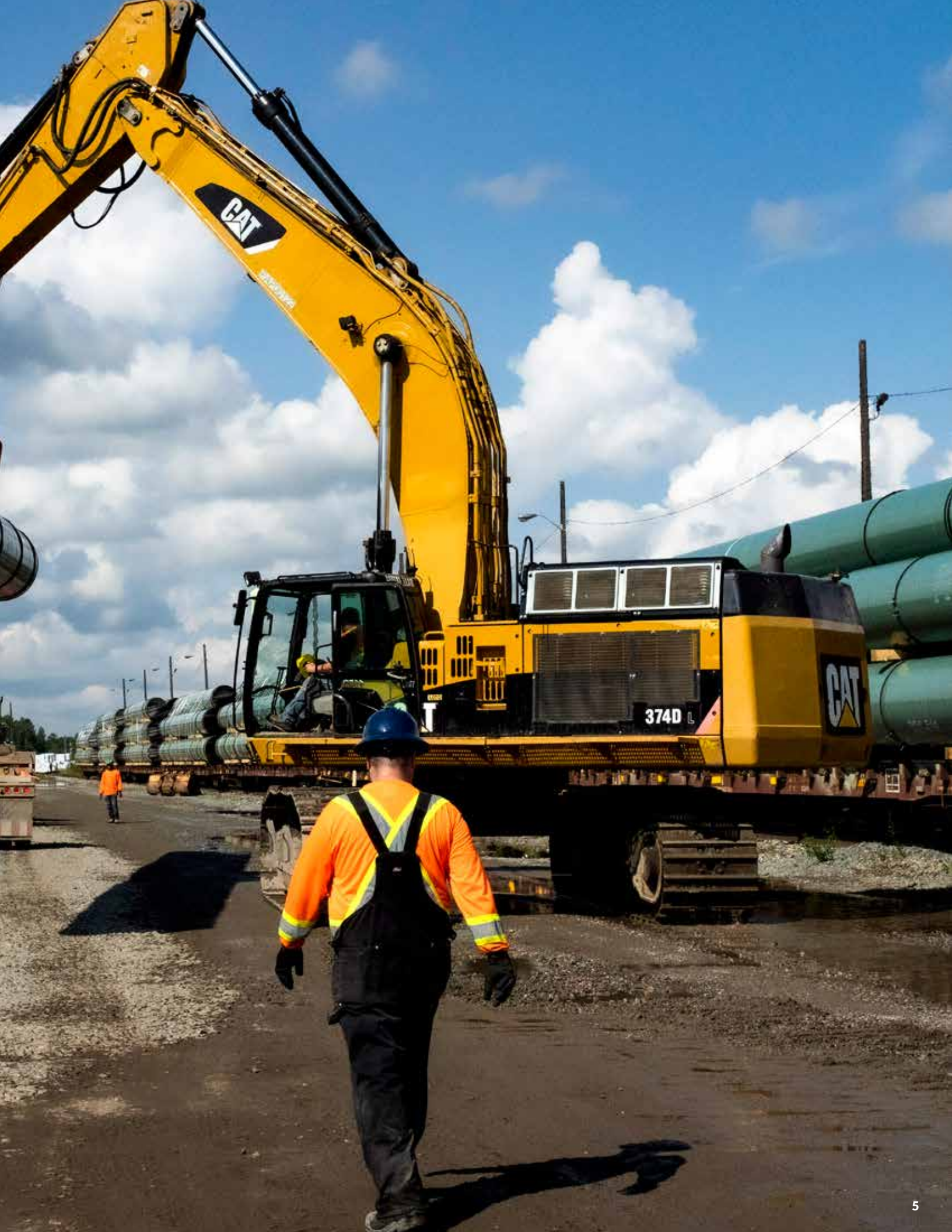
MINING

Your partner in land reclamation, mine infrastructure and facility
construction: **DECKHAND®** is here to help get the big jobs
done—all from the safety of the excavator.

CUSTOM SOLUTIONS

From engineering attachments that can handle flexible pipe to
collaborating with companies on improving their products—we are
proud to offer custom solutions for any size of task.







DECKHAND®

Engineered around optimal safety, the **DECKHAND®** by LaValley Industries allows precise load handling and placement without the need for a ground crew working in the vicinity of moving pipe, poles or road mats. **DECKHAND®** is designed to work safely in any weather condition, including wind, mud, snow and ice.

The **DECKHAND®** system is a modular design that consists of a main head unit used with a variety of interchangeable arms. The main head mounts to any brand of excavator—the excavator's auxiliary hydraulics then safely and efficiently power the **DECKHAND®** system. The interchangeable arms are used to pick up pipe, poles, casings or road mats and securely lift, lower, rotate, and tilt the load under the total control of the operator. Arms can grip securely from an off-center position, allowing maximum control in areas with tight accessibility.

Achieve controlled, 360° precision material handling—whatever the conditions—with **DECKHAND®**.



DECKHAND® ensures that you will move pipe faster and more safely than ever before. No more straps. No more chains. No more dropped pipe.



PIPE HANDLING MADE EASIER AND SAFER THAN EVER BEFORE.

In the past, moving large amounts of pipe under tight time constraints meant personnel were required to quickly load and line up pipe, putting them in harm's way. **DECKHAND®** removes the ground crew from pipe transport, making pipe handling easier and safer than ever before.

- Easily adaptable to all brands and sizes of excavators
- Operator controls easily incorporated into excavator cab
- Load holding valves on all functions keep load secure even if a hydraulic hose fails
- Load sensors provide clear information on grip status as pipe is moved
- In-cab display panel allows operator to monitor and adjust all functions, pressures, and volumes
- Tilt and shift functions allow pipe to be handled in multiple working angles
- Specialized Pipe Arm wear pads protect pipe coating and are designed for long wear and simple replacement



*Whether you're stringing, stockpiling, loading, staging or welding, **DECKHAND®** has you covered with today's safest, most effective pipe handling system.*





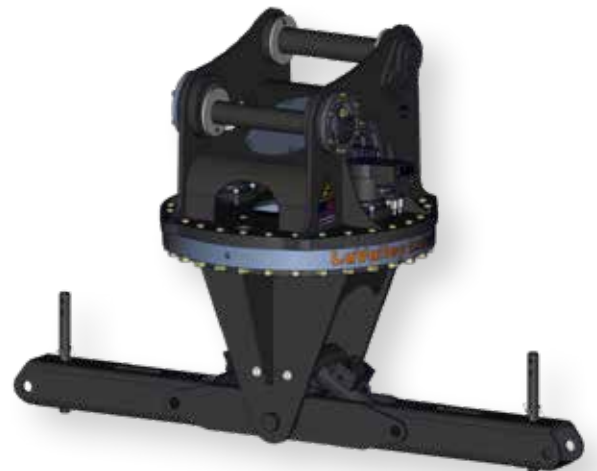
INTRODUCING

▲ **DECKHAND® LT**

Purpose-built and optimized for HDD, the **DECKHAND® LT** offers a safe and cost-effective way to handle drill pipe and tooling on the job site, increasing efficiency and reducing risk to crew.

Use with our Directional Drilling LT Arms for precision in loading drill rigs, positioning pipe, and moving drill rod and tooling around the work area.

- 360-degree continuous rotation for maximum versatility
- In-cab display for monitoring and easy adjustments
- Load hold valves guarantee grip regardless of hydraulic pressure —meaning no dropped pipe!
- Powered by the excavator's auxiliary circuit
- Durability and precision you've come to expect, in a cost-effective package



▲ **DECKHAND® S**

Delivering unparalleled speed, precision, and performance, the **DECKHAND® S** is as safe as it is agile. Out-performs all existing material handling methods.

- Head unit mounts to any brand of excavator in the 18-20 metric ton class
- 360° Continuous Rotation
- Tilts up to 24.5°
- Shifts load side to side up to 5.5" in either direction
- Load locking valves holds load securely regardless of hydraulic pressure
- In-cab display allows operator to safely monitor and adjust all functions, working parameters, and hydraulic settings from inside the excavator
- Requires auxiliary hydraulic circuit on excavator
- Designed to meet ASME Below-The-Hook Lifting Standards



▲ **DECKHAND®**

Strong, safe, and versatile, the **DECKHAND®** revolutionizes the way contractors handle loads. Unmatched speed and precision out-performs all other material handling methods.

- Head unit mounts to any brand of excavator in the 20-36 metric ton class
- 360° Continuous Rotation
- Tilts up to 19°
- Shifts load side to side up to 5.5" in either direction
- Load locking valves holds load securely regardless of hydraulic pressure
- In-cab display allows operator to safely monitor and adjust all functions, working parameters, and hydraulic settings from inside the excavator
- Requires auxiliary hydraulic circuit on excavator
- Designed to meet ASME Below-The-Hook Lifting Standards



▲ **DECKHAND® DH5HP**

The HP stands for high performance. Engineered and built to accomplish the toughest jobs including vertical applications, the **DECKHAND® DH5HP** is revolutionizing the way contractors handle utility poles, pipe and casings.

- Head unit mounts to any brand of excavator in the 20-36 metric ton class
- 360° Continuous Rotation
- Tilts up to 25°
- Shifts load side to side up to 5.5" in either direction
- Load locking valves hold load securely, regardless of hydraulic pressure
- In-cab display allows operator to safely monitor and adjust all functions, working parameters, and hydraulic settings from inside the excavator.
- Requires auxiliary hydraulic circuit on excavator and dedicated case drain line
- Designed to meet ASME Below-The-Hook Lifting Standards



DECKHAND® ARM OPTIONS

INTERCHANGEABLE PIPE ARM

- Designed with interchangeable pipe tips to easily handle 4"-18" diameter coated or uncoated pipe
- Handles pipe on and off trailers, rail cars, or pipe rack without disturbing adjacent pipe
- Sensors allow operator to monitor arm grip status while moving pipe
- Load locking valve system ensures pipe is never dropped
- Proximity sensors inform operator of correct positioning and clearance
- Pipe can be lifted from an off-center position
- Arms utilize long lasting wear pads to protect coated pipe from damage
- Fast and efficient at stringing pipe during pipeline construction
- Can handle pipe covered with snow, ice or dirt

Interchangeable Arm



UTILITY ARM

- Designed to easily handle 7"-26" diameter pipe, poles or casings
- Handles pipe, poles, I-beams and casings in all weather conditions
- Sensors allow operator to monitor arm grip status while moving load
- Load locking valve system ensures load is never dropped
- Arms utilize long lasting wear pads to protect coated pipe from damage
- Load can be lifted from an off-center position
- Fast and efficient at vertical applications, such as utility pole installation
- Ideal for positioning during welding, lowering in, and pipe extraction
- Able to handle bent pipe, elbows, tees and valves
- Can handle load covered with snow, ice or dirt

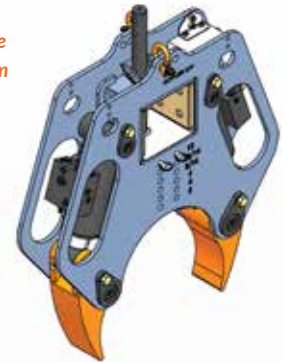
Utility Arm



ADJUSTABLE UTILITY ARM

- Designed to easily handle 2"-16" diameter pipe, poles or casings
- Handles pipe, poles, I-beams and casings in all weather conditions
- Sensors allow operator to monitor arm grip status while moving load
- Load locking valve system ensures load is never dropped
- Arms utilize long lasting wear pads to protect coated pipe from damage
- Load can be lifted from an off-center position
- Fast and efficient at vertical applications, such as utility pole installation
- Ideal for positioning during welding, lowering in, and pipe extraction
- Able to handle bent pipe, elbows, tees and valves
- Can handle load covered with snow, ice or dirt

Adjustable Utility Arm



DIRECTIONAL DRILLING ARM

- Handles 3.5"-9" inch diameter drill rod or uncoated pipe
- Handles pipe on and off trailers, rail cards, or pipe rack without disturbing adjacent pipe
- Sensors allow operator to monitor arm grip status while moving pipe
- Load locking valve system ensures pipe is never dropped
- Proximity sensors inform operator of correct positioning and clearance
- Pipe can be lifted from an off-center position
- Arms utilize long lasting wear pads to protect coated pipe from damage
- Fast and efficient at stringing pipe during pipeline construction
- Can handle pipe covered with snow, ice or dirt

Directional Drilling Arm



DIRECTIONAL DRILLING LT ARM

- Handles 4.5"-9" inch diameter drill rod or uncoated pipe
- Offers the same features as our regular DD arm in a cost-effective package
- Specifically designed and optimized for use with DECKHAND®LT



Directional Drilling LT Arm

PIPE ARM

- Individual sizes designed to handle 4"-24" diameter coated or uncoated pipe
- Handles pipe on and off trailers, rail cars, or pipe rack without disturbing adjacent pipe
- Sensors allow operator to monitor arm grip status while moving pipe
- Load locking valve system ensures pipe is never dropped
- Proximity sensors inform operator of correct positioning and clearance
- Pipe can be lifted from an off-center position
- Arms utilize long lasting wear pads to protect coated pipe from damage
- Fast and efficient at stringing pipe during pipeline construction
- Can handle pipe covered with snow, ice or dirt

Pipe Arm



INTERCHANGEABLE MATERIAL HANDLING ARM

- Utilizes interchangeable material handling tips designed for custom applications
- Sensors allow operator to monitor arm grip status while moving load
- Load locking valve system ensures load is never dropped
- Load be lifted from an off-center position
- Arm tips can be equipped with wear pads to protect pipe or load from damage
- Allows fast, efficient material handling

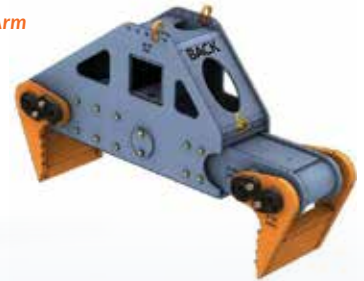
Interchangeable
Material
Handling Arm



MAT ARM

- Designed to precisely handle and position wood or composite mats up to 40' long and 12" thick
- Utilizes interchangeable tines to handle 3', 4', and 5' mats
- Sensors allow operator to monitor arm grip status while moving mat
- Load locking valve system ensures mat is never dropped
- Mats can be lifted from an off-center position
- Mats can be placed with precision under total operator control
- Positive grip allows dirt and debris to be shaken off mats during removal

Mat Arm





DECKHAND® L

Extremely versatile, the **DECKHAND® L** out-performs all other pipe handling methods.

- Head unit mounts to any brand of excavator in the 40-50 metric ton class
- 360° Continuous Rotation
- Tilts up to 14°
- Shifts pipe side to side up to 7.5" in either direction
- Load locking valves holds pipe securely, regardless of hydraulic pressure
- In-cab display allows operator to safely monitor and adjust all functions, working parameters, and hydraulic settings from inside the excavator
- Requires auxiliary hydraulic circuit on excavator and dedicated case drain line
- Designed to meet ASME Below-The-Hook Lifting Standards
- Optional stick-mounted camera allows operator to see in even the most difficult spaces



DECKHAND® L ARM OPTIONS

PIPE ARM

- Individual sizes designed to handle 20"-42" diameter coated or uncoated pipe
- Handles pipe on and off trailers, rail cars, or pipe rack without disturbing adjacent pipe
- Sensors allow operator to monitor Arm grip status while moving pipe
- Load locking valve system ensures pipe is never dropped
- Proximity sensors inform operator of correct positioning and clearance
- Pipe can be lifted from an off-center position
- Arms utilize long lasting wear pads to protect coated pipe from damage
- Fast and efficient at stringing pipe during pipeline construction
- Can handle pipe covered with snow, ice or dirt

Pipe Arm

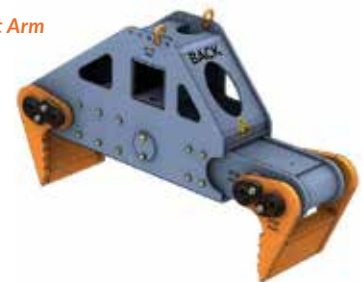


SIZES AVAILABLE: 20" | 24" | 26" | 28" | 30" | 36" | 42"

MAT ARM

- Utilizes interchangeable tines to handle 3', 4' and 5' mats
- Sensors allow operator to monitor arm grip status while moving mat
- Load locking valve system ensures mat is never dropped
- Mats can be lifted from an off-center position
- Mats can be placed with precision under total operator control
- Positive grip allows dirt and debris to be shaken off mats during removal

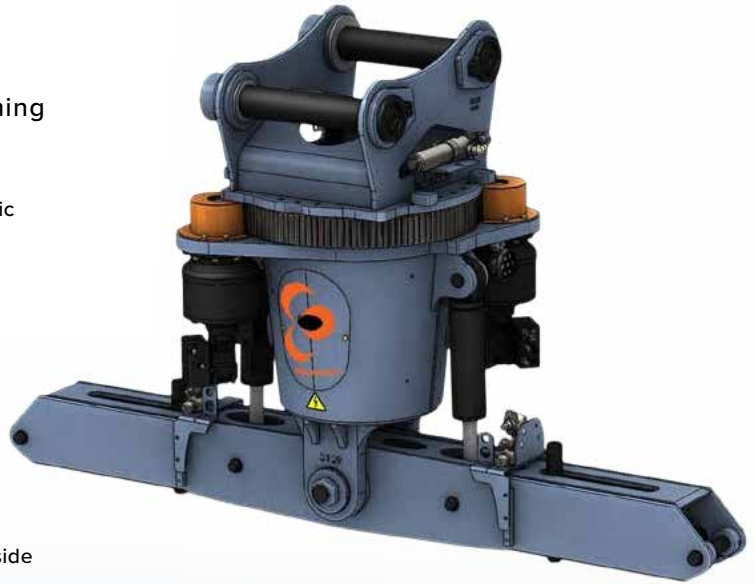
Mat Arm



DECKHAND® XL

The **DECKHAND® XL** handles the largest and heaviest pipe gently and safely, while outperforming all existing pipe handling methods.

- Head unit mounts to any brand of excavator in the 60-75 metric ton class
- Designed to meet ASME Below-The-Hook Lifting Standards
- Load locking valves hold pipe securely, regardless of hydraulic pressure
- 360° Continuous Rotation
- Tilts up to 14°
- Shifts pipe side to side up to 7.5" in either direction
- Requires auxiliary hydraulic circuit on excavator
- In-cab display allows operator to safely monitor and adjust all functions, working parameters, and hydraulic settings from inside the excavator
- Optional stick-mounted camera allows operator to see in even the most difficult spaces



DECKHAND® XL ARM OPTIONS

PIPE ARM

- Individual sizes designed to handle 30"-56" diameter coated or uncoated pipe
- Handles pipe on and off trailers, rail cars, or pipe rack without disturbing adjacent pipe
- Sensors allow operator to monitor Arm grip status while moving pipe
- Load locking valve system ensures pipe is never dropped
- Proximity sensors inform operator of correct positioning and clearance
- Pipe can be lifted from an off-center position
- Arms utilize long lasting wear pads to protect coated pipe from damage
- Fast and efficient at stringing pipe during pipeline construction
- Can handle pipe covered with snow, ice or dirt

SIZES AVAILABLE: **30" | 36" | 42" | 48" | 56"**

Pipe Arm



WELD POSITIONING ARM

- Designed to work with 20"-42" diameter pipe during pipeline tie-in operations
- Can adjust pipe ends for perfect alignment prior to welding
- Equipped with wireless and wired remote pendant for fine positioning
- Can also be used as a pipe handler
- Sensors allow operator to monitor arm grip status while moving load
- Load locking valve system ensures load is never dropped
- Proximity sensors inform operator of correct positioning and clearance
- Arms utilize long lasting wear pads to protect coated pipe from damage
- Can handle pipe covered with snow, ice or dirt

CRC-Evans
Weld Positioning
Arm





TONGHAND®

TONGHAND®

**EXIT-SIDE SOLUTION FOR THE
HORIZONTAL DRILLING INDUSTRY**

Engineered to be the HDD industry's ultimate exit-side tool, **TONGHAND®** by LaValley Industries allows drill rod to be torqued and un-torqued with precision by a single operator from the comfort and safety of the excavator cab. **TONGHAND®** eliminates the use of back-breaking wrenches and removes personnel from working in danger zones. **TONGHAND®** mounts to any brand of excavator—the excavator's auxiliary hydraulics then safely and efficiently power the **TONGHAND®** system. The **TONGHAND®**'s telescoping roller arms are used to pick up drill rod and securely lift, tilt, shift, rotate and precisely position a single rod or drill string under the total control of the operator. The patented **TongVise™** easily makes and breaks joints with guaranteed precision. Whether working with drill rod, subs, reamers or other tooling, the **TONGHAND®** saves you time and money, while improving job-site safety.

**TONGHAND® HAS TRANSFORMED THE WAY CONTRACTORS PERFORM
EXIT-SIDE OPERATIONS BY PUTTING YOU IN THE DRIVER'S SEAT
—AND OUT OF HARM'S WAY.**



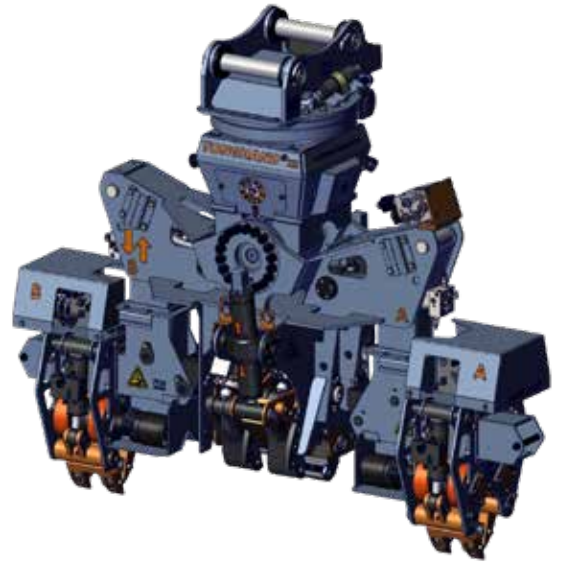
MAKING AND BREAKING JUST GOT A WHOLE LOT EASIER.

In the past, exit-side operations required workers to use back-breaking wrenches to make and break connections often working in danger zones under tight time constraints. **TONGHAND®** automates exit-side procedures, removes ground crew from danger zones and makes/breaks connections with precision, making exit-side operations easier and safer than ever before.

TONGHAND® XS

Engineered to be the HDD industry's ultimate exit-side tool, **TONGHAND® XS** works with smaller diameter drill rod and tooling. As safe as it is agile, it eliminates the use of back-breaking wrenches and removes personnel from danger zones.

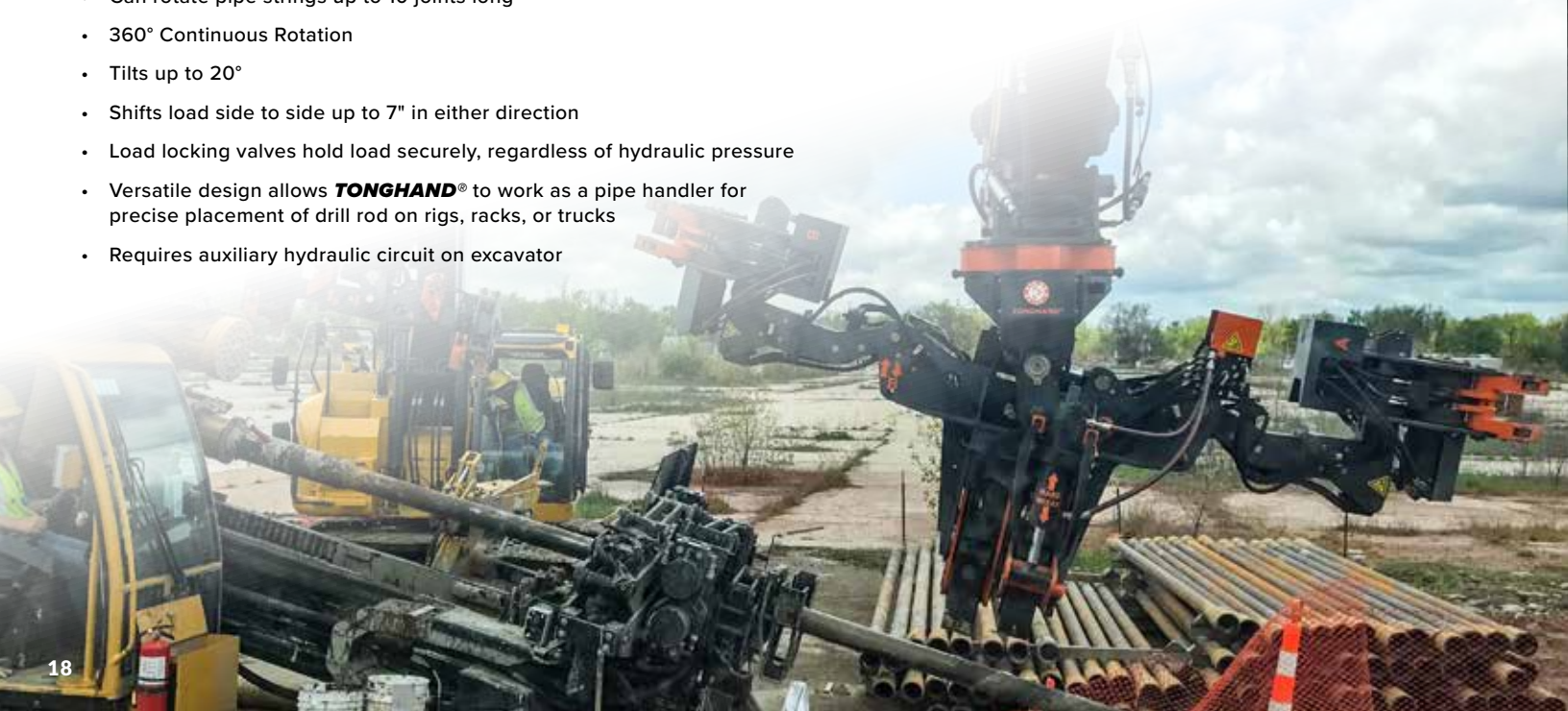
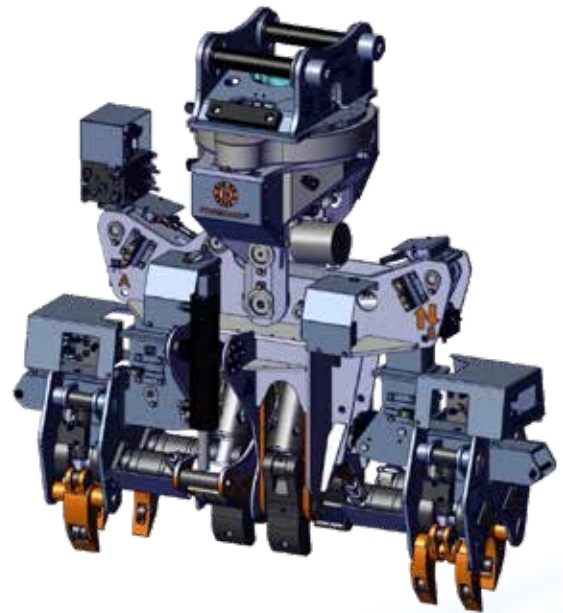
- Head unit mounts to any brand of excavator in the 14-16 metric ton class
- Patented **TongVise™** easily makes and breaks joints up to 30,000 foot pounds of torque
- Works with pipe reamers and adapter sub connections ranging from 2.88" to 4.38"
- Load locking valves holds load securely regardless of hydraulic pressure
- In-cab display allows operator to safely monitor and adjust all functions, working parameters, and hydraulic settings from inside the excavator
- Requires auxiliary hydraulic circuit on excavator
- Designed to meet ASME Below-The-Hook Lifting Standards



TONGHAND®

Delivering unparalleled speed, precision, and performance, **TONGHAND®** revolutionized the HDD industry with its safety and agility in exit-side operations. Out-performs all existing material handling methods while minimizing risk to your crew.

- Mounts to any brand of excavator in the 30-36 metric ton class.
- Operator controls easily incorporated into excavator cab
- Patented **TongVise™** easily makes and breaks joints with guaranteed precision.
- Works with reamers, adapter sub connections and all drill pipe connections ranging from 6.5" to 10" OD
- Patented roller arms and shift function allow you to thread and un-thread all connections with ease
- Gull wing design allows you to easily move arms out of way to make and break reamers up to 60"
- Can rotate pipe strings up to 10 joints long
- 360° Continuous Rotation
- Tilts up to 20°
- Shifts load side to side up to 7" in either direction
- Load locking valves hold load securely, regardless of hydraulic pressure
- Versatile design allows **TONGHAND®** to work as a pipe handler for precise placement of drill rod on rigs, racks, or trucks
- Requires auxiliary hydraulic circuit on excavator



WHAT CAN WE HELP YOU GET A GRIP ON?

CUSTOM SOLUTIONS

Our products and accessories can be adapted to accommodate many tasks while continuing to outperform existing material handling methods while reducing project timelines, costs, and risk to personnel.

INNOVATIVE SOLUTIONS FOR UNIQUE APPLICATIONS.

The very team that has created all of LaValley Industries' products stands ready to assist you in creating a customized solution to meet your needs. From concept design to finished product, our award-winning team can create a unique solution in a timely manner with unmatched innovation.

- Customized **DECKHAND**® based material handling solutions
- Customization of existing equipment, such as excavator modifications
- Specialized equipment design and manufacturing
- Mechanical engineering and design
- Hydraulic system engineering and design
- Electrical systems and design
- Rapid prototyping services





*"I am often asked, 'How did you come up with the idea for the **DECKHAND**®?' It is a story that I love to share, as it speaks not just to the invention of the **DECKHAND**®, but to the overall spirit of our company. My goal in developing the **TONGHAND**® was exactly the same as the original **DECKHAND**®— finding a better & safer way to get the job done."*

- JASON LAVALLEY

Founder & CEO of LaValley Industries

AROUND THE GLOBE, WE ARE INNOVATING THE FUTURE OF MATERIAL HANDLING FOR PIPELINE, CONSTRUCTION, HDD, MINING AND UTILITY INDUSTRIES.




DECKHAND
MATERIAL HANDLING


TONGHAND
EXIT SIDE

 **LaValley Industries.**

1876 23rd Street SE
Bemidji, Minnesota 56601

(218) 444-3030

lavalleyindustries.com