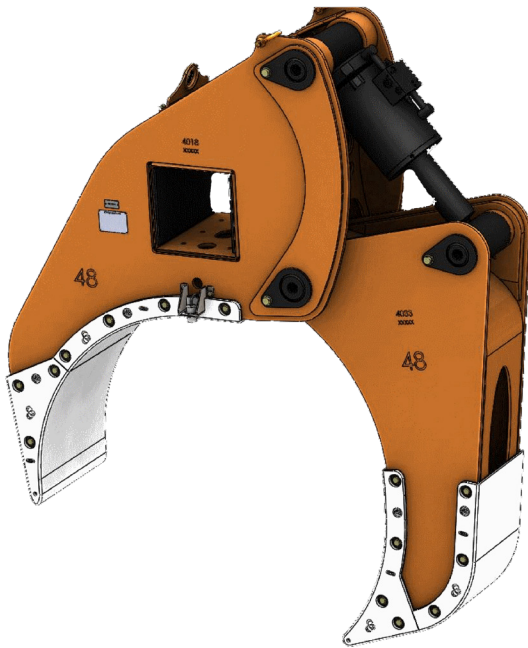


DECKHAND® XL ARM OPTIONS



PIPE ARM

- Individual sizes designed to handle 28"-56" diameter coated or uncoated pipe
- Handles pipe on and off trailers, rail cars, or pipe rack without disturbing adjacent pipe
- Sensors allow operator to monitor Arm grip status while moving pipe
- Load locking valve system ensures pipe is never dropped
- Proximity sensors inform operator of correct positioning and clearance
- Pipe can be lifted from an off-center position
- Arms utilize long lasting wear pads to protect coated pipe from damage
- Fast and efficient at stringing pipe during pipeline construction
- Can handle pipe covered with snow, ice or dirt

WELD POSITIONING ARM

- Designed to work with 20"-42" diameter pipe during pipeline tie-in operations
- Can adjust pipe ends for perfect alignment prior to welding
- Equipped with wireless and wired remote pendant for fine positioning
- Can also be used as a pipe handler
- Sensors allow operator to monitor arm grip status while moving load
- Load locking valve system ensures load is never dropped
- Proximity sensors inform operator of correct positioning and clearance
- Arms utilize long lasting wear pads to protect coated pipe from damage
- Can handle pipe covered with snow, ice or dirt

