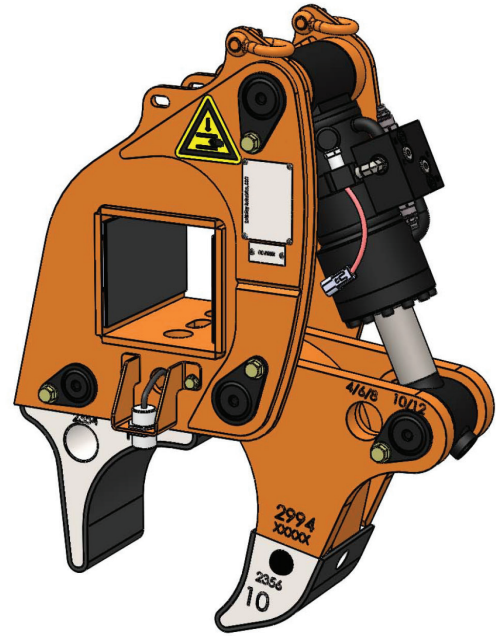


# INTERCHANGEABLE PIPE ARM

## 4-12"

Designed with interchangeable pipe tips to easily handle 4-12" diameter coated or uncoated pipe using the DECKHAND S, DECKHAND, or DECKHAND 5HP models

- Handles pipe on and off trailers, rail cars, or pipe rack without disturbing adjacent pipe
- Sensors allow operator to monitor arm grip status while moving pipe
- Load locking valve system ensures pipe is never dropped
- Proximity sensors inform operator of correct positioning and clearance
- Pipe can be lifted from an off-center position
- Arms utilize long lasting wear pads to protect coated pipe from damage
- Fast and efficient at stringing pipe during pipeline construction
- Can handle pipe covered with snow, ice or dirt



### DECKHAND INTERCHANGEABLE PIPE ARM

#### 4-12 INCH IPA SPECIFICATIONS

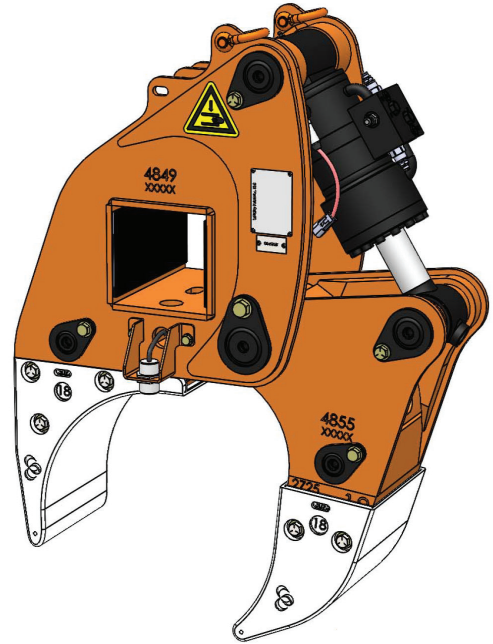
|  |   |
|--|---|
| Part Number                                      | 2375                                      |
| Model Number                                     | IPA                                       |
| Main Beam Size (inches)                          | 6x6                                       |
| Material Capacity                                | 4-12 IN / 10 - 30.5 CM                    |
| Capacity (per two arms)                          | 11,000 LB / 4,990 KG                      |
| Weight (without tips)                            | 320 LB / 145 KG                           |
| Shipping Crate P/N                               | 2577                                      |
| Shipping Dimensions (arm set in crate)           | 40L x 34W x 44H IN / 102L x 86W x 112H CM |
| Shipping Weight (arm set with crate and no tips) | 970 LB / 440 KG                           |

# INTERCHANGEABLE PIPE ARM

## 14-18"

Designed with interchangeable pipe tips to easily handle 14-18" diameter coated or uncoated pipe using the DECKHAND S, DECKHAND, or DECKHAND 5HP models

- Handles pipe on and off trailers, rail cars, or pipe rack without disturbing adjacent pipe
- Sensors allow operator to monitor arm grip status while moving pipe
- Load locking valve system ensures pipe is never dropped
- Proximity sensors inform operator of correct positioning and clearance
- Pipe can be lifted from an off-center position
- Arms utilize long lasting wear pads to protect coated pipe from damage
- Fast and efficient at stringing pipe during pipeline construction
- Can handle pipe covered with snow, ice or dirt



### DECKHAND INTERCHANGEABLE PIPE ARM MEDIUM

#### 14-18 INCH IPAM SPECIFICATIONS

|  |  |
|--|--|
| Part Number                                      | 2694                                       |
| Model Number                                     | IPAM                                       |
| Main Beam Size (inches)                          | 6x6  |
| Material Capacity                                | 14-18 IN / 35.6 - 45.7 CM                  |
| Capacity (per two arms)                          | 13,000 LB / 5,897 KG                       |
| Weight (without tips)                            | 620 LB / 281 KG                            |
| Shipping Crate P/N                               | 2578                                       |
| Shipping Dimensions (arm set in crate)           | 54L x 43W x 54H IN / 137L x 109W x 137H CM |
| Shipping Weight (arm set with crate and no tips) | 1,800 LB / 816 KG                          |